

CT DEEP **2017**
FISHING REPORT NUMBER 5
5/11/2017



Black Crappie (*Pomoxis nigromaculatus*)



YOU CAN FIND US DIRECTLY ON FACEBOOK. This page features a variety of information on fishing, hunting, and wildlife watching in Connecticut. The address is www.facebook.com/CTFishandWildlife.



INLAND REPORT

DEEP'S 2017 IN-SEASON SPRING TROUT STOCKINGS NEARING COMPLETION. Prior to Opening Day, approximately 306,000 trout were stocked into nearly 100 lakes and ponds and over 120 rivers and streams located throughout Connecticut. DEEP's in-season stockings are now underway with nearly 210,000 additional trout scheduled to be stocked between Opening Day and the middle of May.

TROUT - RIVERS & STREAMS -

Trout anglers have had to work a bit to find some action last week thanks to last Friday's rainfall increasing flows in many areas (currently flows are back at typical levels for mid-May levels with two notable exceptions, the Farmington River and the Housatonic river, see [streamflow graphic on page 6](#)), and

cool air temperatures keeping water temperatures more like mid-April. With the possibility of 1-2 inches of rain in the forecast for Saturday evening and night, conditions, especially late in the weekend, may be on the tough side in some areas (depending on actual rainfall amounts). Anglers may want to keep smaller streams and tributaries in mind as they'll drop quickest should rainfall totals be on the high end (stream flows for a number of areas can be found at <http://waterdata.usgs.gov/ct/nwis/rt>).

There are plenty of trout stocked and waiting for anglers. Hatches are starting but have not hit full potential. Light Cahills, midges, ants and of course BWO's are still working. Hendricksons are out on the Housatonic and Farmington rivers (flows are however on the high side at both rivers). Streamers are doing better than nymphing, the usual suspects, including Black Ghost, Mickey Finn, Slim Jim, Copper Johns and



NCLI® Great Park Pursuit Kick-Off!

FREE Family Fishing Day
(no license required)

Saturday, May 13, 2017, 9 AM – 3 PM

Chatfield Hollow State Park

381 CT-80 Killingworth, CT

Please pack a picnic and join us for a fun day of family fishing, led by our CARE fishing instructors and the Hammonasset Chapter of Trout Unlimited. Other activities will include the fish fry, fishing games/trivia, nature hikes, arts & crafts, and more!

Pre-registration required to be eligible for final Great Park Pursuit prize (Registration opens on Friday, March 24 and closes on Friday, May 5, 2017)

No registration required to come for the day.

For more information and to register:

www.NoChildLeftInside.org

kristen.bellantuno@ct.gov 860-424-3917



Connecticut Department of
Energy & Environmental Protection
79 Elm St., Hartford, CT 06106
www.ct.gov/deep/StateParks
Rob Klee, Commissioner



Saturday May 13th is FREE Fishing Day. Anyone can fish without a fishing license! Each year the FREE fishing day enables you to connect with nature, improve your health by relaxing outside, and spend quality time socializing with family and friends - all on us! For a list of events in addition to DEEP's event above, see page 6.

Hare's Ears are working. For bait anglers, Power Bait (pink) and worms are finding some action. Limited reports available this week, the Hammonasset River was reporting mixed results, with fish being "fussy."

Farmington River – Anglers who hit the river last week found fair to good fishing with moderate flows. Anglers reported some 20 inch plus Survivor Browns in the Barkhamsted and New Hartford areas. Those who hit the river this week found increasing flows and breezy conditions. Currently flows are high (841 CFS at Riverton plus an additional 180 CFS from the Still River). It's likely that flows above the Still River will decrease for the weekend, however, depending on rainfall amounts, flows from the Still River will likely again increase. Saturday is likely the better weekend day to fish this river. Water temperatures remain cool for this time of year ranging from the low 40's to around 50 °F.

Hatches/patterns. Just like last week, the typical mid-late April hatches/patterns continue as temperatures struggle to move upwards. With the higher flows nymphs and streamers should produce. Extra care should be taken when wading (fishing pools will be easier). Typical go-to flies this time of year include Blue Wing Olive, Hendrickson (now ranging from Unionville up to the upper end of the year-round catch-and-release area), Winter/Summer Caddis, Pheasant Tails, Hares Ears, Stonefly nymphs, Midge and Blue Quill. Nymphs (#18-22) are always a good go-to fly, try Bead Head, Midge Pupa, Brassie, Zebra Midge or Copper John patterns. Streamers are also a good option (White Zonkers & Buggers (#4-12) as well as Muddlers, Grey or Black Ghost).



Housatonic River – Anglers found high, difficult to fish flows earlier this week. Flows are still higher (currently 1,780 cfs at Falls Village and 2,660 at Gaylordsville) than typical mid-May levels but continue to clear and drop to more comfortable levels for fishing. Plenty of trout are there as the river was stocked (both the upper TMA and the Bulls Bridge/Ten Mile River TMA last week) by DEEP and by Housatonic River Outfitters. Conditions this weekend will likely be best on Saturday, as flows will again increase following the rains forecast for late Saturday. Anglers can call FirstLight Power Resources at 1-888-417-4837 or check the USGS website (<http://waterdata.usgs.gov/ct/nwis/current/?type=flow>) for updated Housatonic River flow information (and also check with a local bait & tackle shop). Morning water temperatures are currently in the low 50's °F.

Hatches/patterns. The typical patterns for late April continue to work in mid-May, and include March Brown (#10-12), Pheasant Tail (#12-18), Stoneflies (#6-10), Pheasant Tails (#14-20), and Black Stoneflies (#18-22). Hendriksons are on the river. Nymphing (try Bead Head, Midge Pupa or Copper Johns) and streamers (such as White/Yellow Zonkers or Woolly Buggers) are good options for fishing the current flows.

RIVERS AND STREAMS STOCKING UPDATE (Note that all stocking schedules are subject to change):

In **eastern Connecticut**; the **Scantic River** (both "lower" and "upper" sections), **Branford River**, upper **Farm River**, **West River**, **Shunnock Brook**, **Bigelow Brook**, **Quanduck Brook**, **Skungamaug River**, **Hop River**, **Pachaug River**, **Choate Brook**, **Broad Brook** (Preston), **Hunts Brook**, **Latimer Brook**, **Furnace Brook** (Stafford), **Hockanum River** (upper and lower), the **Willimantic River** (portions of the river upstream of the TMA, and downstream of the TMA), **Roaring Brook** (Stafford), **Susquetonscut Brook**, **Blackwells Brook**,

Jeremy River, Dickenson Creek, Shetucket River, Mount Misery Brook, Myron Kinnie Brook, Whitford Brook, Mount Hope River and the Fenton River were stocked.

In **western Connecticut**; the upper and middle **Bantam River** (the “outlet” and “inlet”), **Butternut Brook**, **Mill River** (Hamden, including the **Sleeping Giant TMA**), and the **Farmington River TMA** (the West Branch Farmington River from the Goodwin Dam down to the upper boundary of the year-round catch-and-release area), the **Mianus River** (including the TMA), **Naugatuck River TMA**, **Mad River**, **Blackberry River**, **Whiting River**, **Pomperaug River**, lower **Naugatuck River**, **Farmill River**, and the **Pequabuck River** were stocked.

TROUT-LAKES & PONDS – Anglers are reporting fickle trout with catches variable from day to day. Fair to good trout action was found at Candlewood Lake (good reports from near Lattins Cove, nothing big but lots of stockie-size fish) and Saugatuck Reservoir, fair at East Twin Lake and Crystal Lake, and spotty at Highland Lake and Beach Pond.

LAKES AND PONDS STOCKING UPDATE (Note that all stocking schedules are subject to change):

In **eastern Connecticut**; **Freshwater Pond**, **Somersville Mill Pond**, **Amos Lake**, the **Hewitt Fly Pond**, **Bigelow Pond**, **Black Pond** (Woodstock), **Billings Lake**, **Quonnipaug Lake**, **Rogers Lake**, **Shenipsit Lake**, **Hanover Reservoir**, and **Black Pond** (Middlefield/Meriden) were stocked.

In **western Connecticut**; **Ball Pond**, **Lake McDonough**, **West Hill Pond**, the **Mad River Flood Control Impoundment**, **Fountain Lake**, and **Nells Rock Reservoir** were stocked.

TROUT PARKS – Good reports from a number of the trout parks, including Chatfield Hollow, Black Rock, Mohegan Park Pond and Valley Falls Park Pond Trout Parks.

COMMUNITY FISHING WATERS- **Butternut Park Pond** (Rowan’s Pond), **Stanley Quarter Park Pond**, **Beaver Park Lagoon**, and **Pickett’s Pond** were stocked this week.

LARGEMOUTH BASS fishing continues to pick up but can be very variable. Fish are on beds in a number of areas, but water temperatures are slow to warm, with smaller waters generally warming more. Some nice 5-6 lb bass are being found at Candlewood Lake. Smaller ponds such as Uncas Lake, Messerschmidt Pond, and the Branford Supply Ponds in the southeast are providing some action (jerk baits are working better than topwaters). **Tournament angler** reports are from Amos Lake (fair to good, 3.98 lb lunker, fish averaged over 2 lbs apiece), Connecticut River (fair action, with a 4.67 lb lunker), Pattagansett Lake (tough for most, 3.22 lb lunker), Lake Lillinonah (slow for largemouth, with 5.32 lb and 2.6 lb lunkers), Pachaug Pond (tough bite, anglers had to work for their fish, but fish averaged over 2 lbs apiece with a 4.69 lb lunker), Gorton Pond (slow to fair, 4.73 lb lunker), Mansfield Hollow Reservoir (tough day on mostly small fish, 3.02 lb and 1.76 lb lunkers, but everything else averaged less than a lb apiece), Candlewood Lake (fair to good, 5.08 lb lunker), Gardner Lake (tough fishing for one club, with a 2.55 lb lunker, better fishing and a 4.40 lb lunker for a second club), , Pickerel Lake (fair, 3.52 lb lunker), and Bashan Lake (fair to good action, 2.55 lb lunker).



A jumbo buketmouth taken from a private “honey hole” by John B.

SMALLMOUTH BASS. Smallmouth are providing some action, with good to very good reports from Candlewood Lake (lots of 3-5 lb smallies, tubes, Keitech swim baits and drop shots are having success at times) and fair reports from Lake McDonough and Highland Lake. **Tournament angler** reports are from Candlewood Lake (fair to good for many anglers, with lots of 3-4 lb fish and several 5 lb plus fish, lunkers included 5.56 lb, 4.38 lb), Connecticut River (a few found from below Hartford to Haddam, with a 3.75 lb lunker), Lake Lillinonah (slow to fair for most, 3.1 lb lunker), Gardner Lake (very few found), and Bashan Lake (few).

WALLEYE & NORTHERN PIKE. Sparse action reported from Squantz Pond (some catches reported), Saugatuck Reservoir and Batterson Park Pond. A few Pike from the CT River (Haddam), Lake Lillinonah (despite high water) and Lake Zoar.

CHAIN PICKEREL. Good reports from Bashan Lake, with fish up to 2.5 lbs being caught, and a number of other lakes and ponds, especially in southeastern parts of the state.

COMMON CARP fishing remains good in Batterson Park Pond, Lake Zoar, Lake Lillinonah, Quinebaug River and Aspinook Pond. A nice ~8 pound fantail reported by Cote N.

BLACK CRAPPIE are becoming more aggressive hitting small Rapala and small jigs. Look for a “slab” at your favorite fishing hole. Some really nice crappie are reported from Candlewood Lake

CONNECTICUT RIVER

Flows have dropped (although still above typical mid-May levels) and are clearing. Water temperatures remain cool, and likely have affected runs. Expect flows to increase early next week in the aftermath of the rains forecast for the weekend. **AMERICAN SHAD** can be found throughout the river with variable action reported (some times of slow action, and some times of good action reported), likely driven by water temperatures slowing them down. Willow leafs have been working. Some **STRIPED BASS** (schoolie-size and a few bigger fish) are being found throughout the river, but best action is in the lower portions. **LARGEMOUTH BASS** are providing some action in the coves from just below Hartford to Haddam. **CHANNEL CATFISH** are providing some solid action in the Connecticut River and Salmon River cove. Cut bait is working well.



ZEBRA MUSSELS REMINDER

Zebra mussels are now found in a number of locations scattered throughout the Housatonic River and its impoundments including Lake Lillinonah (since 2010), Lake Zoar (since 2010) and Lake Housatonic (since 2011).

Prior to their discovery in Lakes Lillinonah and Zoar in 2010, zebra mussels had been found (1998) in CT only in East Twin Lake and West Twin Lake (Salisbury). Anglers fishing in any of these waters and western Connecticut in general **should use extra care to avoid transporting water, aquatic vegetation, and possibly zebra mussels to new locations.** Information

For more information including precautions that should be taken to prevent the spread of zebra mussels to additional waters, visit www.ct.gov/deep/invasivespecies or the Aquatic Invasive species section of the 2017 CT angler's Guide (www.ct.gov/deep/anglersguide).

COME TAKE A TOUR OF THE RAINBOW FISHWAY- See migrating fish in the underground viewing window.

PLAN NOW - DEEP's annual OPEN HOUSE AT THE RAINBOW FISHWAY will be Saturday, May 20, from 10:00 am until 3:00 pm. The public is invited to visit the fishway and learn about both it and the fish it passes. During this day, the public can tour the facility and are encouraged to go downstairs and check out the underground viewing window. Shad, lamprey and Atlantic salmon may be seen passing upstream. Staff will be on hand to answer questions. This is a **GREAT ACTIVITY FOR FAMILIES**, and there is no fee.

NOTES & NOTICES:

BRANFORD RIVER (boat launch). The Branford River state boat launch continues to be closed for renovations. Alternative nearby launch sites include the Guilford Town boat launch and the East River State boat launch, both in Guilford.

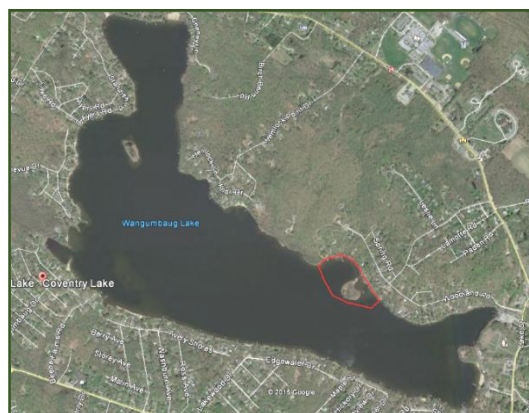
CONNECTICUT RIVER (invasive species alert). Hydrilla was recently found in the main stem Connecticut River in Glastonbury (near Glastonbury's Riverfront Park & Boathouse). See the Coventry Lake entry below for what river users should do to prevent spread of this invasive plant to other waterbodies.

CONNECTICUT RIVER (Glastonbury - rowing regatta). A high school event is currently scheduled for **Saturday, May 13 from 8:00 am to 2:00 pm** in the Glastonbury-East Hartford area. Boaters should use additional caution in this area.

CONNECTICUT RIVER (Middletown - rowing regatta). A high school event is currently scheduled for **Saturday, May 13 from 8:30 am to 1:30 pm** in the Middletown area. Boaters should use additional caution in this area.

COVENTRY LAKE (invasive species alert). Hydrilla, a very highly invasive aquatic plant, has been found growing in Coventry Lake. All lake users should take extra care to check and clean their boats (including canoes, kayaks and rowing sculls), trailers, and fishing equipment before leaving the boat launch, or leaving the lakeshore.

Coventry Lake (Wangumbaug Lake) boaters should avoid the area outlined in red to avoid fragmenting and spreading hydrilla. This is only area in the lake where hydrilla has been found.



GLASGO POND (drawdown). Glasgo Pond has refilled, however the state boat launch remains closed until all work is completed.

HOUSATONIC LAKE (rowing regatta). A high school rowing regatta is scheduled for **Saturday, May 13th** from 2:30 pm to 5:30 pm. Boaters should use additional caution on the lake.

LAKE LILLINONAH (rowing regatta). A high school rowing regatta is scheduled for **Saturday, May 13th** from 1:00 pm to 4:00 pm in the uppermost one and one-half miles of the lake. Boaters should use additional caution on the northern portion of the lake.

NEW INTERACTIVE TROUT STOCKING MAP NOW AVAILABLE.

Anglers can find more information on trout stocking online. A list of the waters that were dropped from this year's stocking schedule is on our webpage at: www.ct.gov/deep/fishing, along with an interactive trout stocking map (www.ct.gov/deep/troutstockingmaps) that anglers should find very useful for planning their next outing. The new application (mobile friendly) provides the number of days since the last stocking at each of our stocked waters enabling anglers to search for their favorite waterbody or by that have been recently stocked.

May 13th FREE FISHING DAY EVENTS

FLY FISHING CLINIC, Wilton: The Mianus Chapter of Trout Unlimited is offering a free Fly Fishing Clinic at Merwin Meadows Park in Wilton between 10:00 a.m. and 2:00 p.m. Fly casting, knot tying, aquatic insect identification and a late barbecue lunch are on the schedule. More information can be found at www.mianustu.org. For reservations email jyates@mianustu.org or call 203-216-7078.

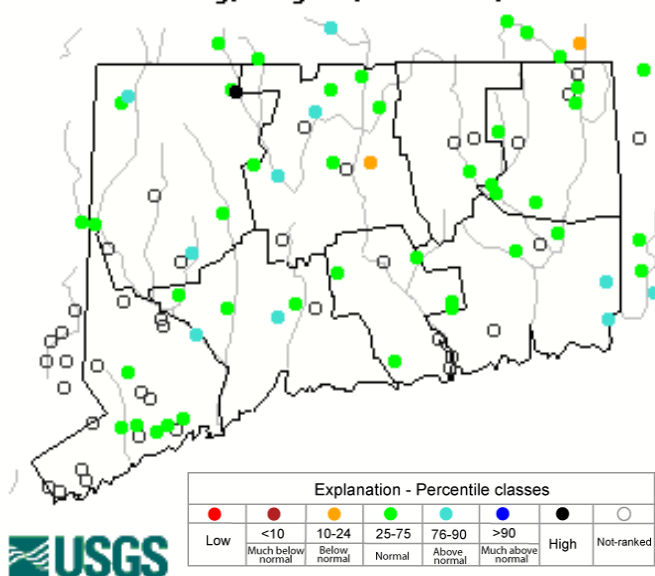
Carl D'Addaraio Children's Fishing Derby - Mirror Lake (Hubbard Park), **Meriden:** Annual children's fishing event sponsored by the Meriden Rod and Gun Club and the City of Meriden with prizes in various age groups for biggest fish and most fish caught. Each child also gets a free hotdog and soft drink. Some of the top prizes include bicycles. This event is rain or shine and registration begins at 9:00 a.m. and the derby starts at 10:00 a.m. and ends at 12:00 noon. For more information contact Mike Roberts at michaelroberts@mindspring.com

Fishing Northeast invites all children and their families to **Casting With Kids at Pickett's Pond**, Osbornedale State Park in **Derby** for a fun filled day of fishing, games, food and great company. All children will be taught the basics of fishing freshwater with all gear, tackle and bait provided. Adults are welcome to join in but must provide their own gear and tackle. Snacks, food and drink will be provided. This is a free event running from 9am-3pm. Full details can be found at <http://bit.ly/2pO1b79>.

"**FREE Family Fishing Day**" as part of the Great Park Pursuit Connecticut State Parks Family Adventure - Chatfield Hollow State Park, **Killingworth**. Open to families and children, this free event will run from 9:00 a.m. to 3:00 p.m., and will include fishing on the pond, fish sampling, fish stocking, a fish fry, and fun activities for all ages.

STREAM FLOW CONDITIONS (as of 5/11/2017)

Thursday, May 11, 2017 20:30ET



Data in the state graphic to the left are generated by the United States Geologic Survey (USGS) and are available on line at: <http://waterdata.usgs.gov/ct/nwis/rt>. A percentile is a value on a scale of one hundred that indicates the percent of data in the data set equal to or below it. For example streamflow greater than the 75th percentile means only ¼ of the streamflow values were above the value and thus would be considered "above normal". Stream flow between the 25th and 50th are considered to be "normal flows" and those 25th or less are considered to be "below normal".

TROPHY FISH AWARD PROGRAM:

DEEP's [Trophy Fish Award Program](#) recognizes angler skill by awarding a bronze pin for your first trophy fish, a silver pin for your fifth trophy fish, and a gold pin for your tenth trophy fish. Angler of the year is awarded at our annual Trophy Fish Award Ceremony.

To see if your fish qualifies check out the criteria on page 13 of the [Angler's Guide](#). If you have caught a trophy fish be sure to fill out the affidavit (page 12 of the Angler's Guide) and submit the required photo(s) and form to us. Good luck!

MARINE FISHING REPORT



Surface water temperatures in Long Island Sound (LIS) are in the low to mid 50's °F. Check out the following web sites for more detailed water temperatures and marine boating conditions:

<http://www.mysound.uconn.edu/stationstat.html>

http://marine.rutgers.edu/mrs/sat_data/?nothumbs=1

<http://www.ndbc.noaa.gov/>

<http://www.wunderground.com/MAR/AN/330.html>

Connecticut State Boundary Line in Long Island Sound. Anglers please note: Though Connecticut has reciprocity with neighboring states (New York, Rhode Island, Maine and Massachusetts), residents of Connecticut are required to have a CT Resident Marine Waters or All Waters Sport Fishing License to fish in the Marine District.

STRIPED BASS fishing continue to be good around the Full "Flower" Moon in all of the tidal rivers along the Connecticut shoreline. There are also some very big keepers (49 pound cow bass Norwalk and Stonington) in the mix as well. Striper spots include the Pawcatuck River, Mystic River, Thames River, Niantic River, lower Connecticut River (DEEP Marine Headquarters fishing pier and Dock and Dine), Black Hall River, New Haven Harbor (Sandy Point), Housatonic River and Norwalk Harbor including the islands. Sand and blood worms have been working the best, especially in turbid waters around the high tide and the beginning of the ebb. Casting swimming lures, small jigs (Chartreuse color) with twister tails, soft baits, and Kastmasters and other metal lures will all work. Fishing is awesome in the lower rivers/estuaries where the water temperature has approached the magical 55°F mark and there are schools of menhaden! The top-water fishing with has been fantastic...

SUMMER FLOUNDER fishing season opens May 17 to September 21. Time to get the boat, and fishing gear ready for some phenomenal early season fluke fishing. [CT Bait & Tackleshop List](#)

BLACK SEA BASS fishing is slow. The early season hot spot is Falkner Island. Fishing over any deep water structure in 60 to 100 ft around slack tide will produce some trophy-sized "humpbacks". It's important to continue to move from structure to structure to find these beautiful and awesome eating fish. Remember, **CT black sea bass regulations are as follows...15 inch min. length, 5 fish daily limit from May 1st to December 31st.** Berkely Gulp (swimming mullet) on a jig along with squid with a spinner works great for these "Bucketmouths".

SCUP (porgy) fishing is fair overall but improving along with the weather.

Time to plan a trip on the many wonderful party/charter boats in CT.

[CT Party Boat Association](#). Fishing is much better in Gardiners Bay and the Peconics. Porgies measuring 12-16 inches ("hubcap size") have been reported! Porgy fishing has also been reported at these shore fishing locations: Rocky Neck State Park, Meigs Point Hammonasset State Park and Fort Trumbull State Park.

Locate your favorite [Enhanced Shore Fishing Opportunities](#) for these excellent eating "Reef Slammers". These "panfish of the sea" are easily caught on sandworms/cut squid or any other small piece of bait. Contact your [local bait and tackle shop](#) for updated fishing information.

WEAKFISH look for these awesome eating fish in Guilford/New Haven Harbor over to the Milford/Stratford area along with the Peconics (NY).

BLUEFISH The Race, Millstone Outflow, Plum Gut and the north side of Long Island including Gardiners Bay and the Peconics are the early season hotspots.

WINTER FLOUNDER fishing remains slow but improving in the Poquonock River at Bluff Point State Park, Niantic River, The Brothers, Jordan Cove, lower Saugatuck River, Calf Pasture Beach area, Norwalk Islands (Cockonoe) and the channels in Norwalk Harbor. Other flounder spots include the lower Mystic River, and the mouth of the Thames River in the Pine Island area including Baker Cove.

WHITE PERCH fishing is good to excellent for these tasty panfish in most of the tidal rivers and coves along the Connecticut shoreline. Perch spots include the Pawcatuck River, Mystic River, Thames River, upper Niantic River, lower Connecticut River (DEEP Marine Headquarters fishing pier), Black Hall River, Lieutenant River, North/South Cove and Hamburg Cove. Shrimp and small worms are the key to success.

For Current Connecticut Recreational Fishing Regulations: Anglers should consult the 2017 Connecticut Anglers Guide which is now available at most Town Clerks Offices, DEEP offices and at tackle stores selling fishing licenses. Current regulations, electronic versions of the Angler's Guide and additional information can all be accessed on the DEEP website at: www.ct.gov/deep/fishing.

PLEASE CALL 1.800.842.4357 TO REPORT FISHING VIOLATIONS.

SHORE FISHING SPOTS & TIDE TABLE INFORMATION

To find a saltwater shore fishing spot close to where you live, go to the following website:

<http://www.lisrc.uconn.edu/coastalaccess/>.

For **Enhanced Opportunity Shore Fishing** sites and other fishing information including a site map go to the following website

<http://www.depdata.ct.gov/maps/saltwaterfish/map.htm>.

Please see page 64 of the [2017 CT Angler's Guide](#) for CT tide information.

The Connecticut Department of Energy and Environmental Protection is an Affirmative Action/Equal Opportunity Employer that is committed to complying with the requirements of the Americans with Disabilities Act. Please contact us at (860) 418-5910 or deep.accommodations@ct.gov if you have a disability and need a communication aid or service; have limited proficiency in English and may need information in another language; or if you wish to file an ADA or Title VI discrimination complaint.

DEEP WEEKLY Fishing Report



Connecticut Department of
ENERGY & ENVIRONMENTAL PROTECTION

79 Elm Street, Hartford, CT 06106

www.ct.gov/deep